

Futura Adapter Plate Installation Instructions

Description

Novar's Futura Adapter Plate is an optional plate that can be used when installing a Novar Futura Temperature Sensor over a 2 1/4-inch utility box. (For information about installing a Futura Temperature Sensor, refer to the installation instructions supplied with the sensor.)

Specifications

Physical Dimensions

Width:	4 1/2 inches
Height:	3 1/8 inches
Depth:	3/16 inch

Mounting the Adapter Plate

NOTE! The adapter plate can be mounted horizontally or vertically. The Futura Temperature Sensors must be mounted horizontally.

The hardware kit included with the adapter plate includes two threaded inserts, two flat-head machine screws, and two pan-head machine screws (used to attach the sensor to the adapter plate; refer to the sensor's installation instructions).

Before mounting the adapter plate, the two threaded inserts included in the hardware kit must be inserted into two holes on the plate. If the sensor is to be mounted horizontally, the inserts should be inserted into the holes shown in Figure 1. If the sensor is to be mounted vertically, the inserts should be inserted into the holes shown in Figure 2.

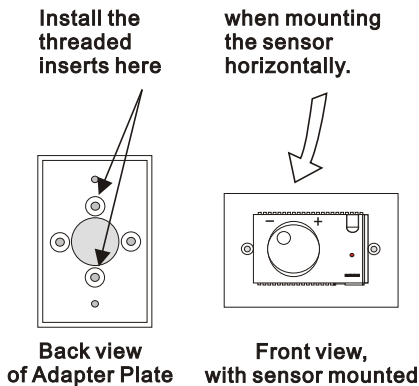


Figure 1. Horizontal installation

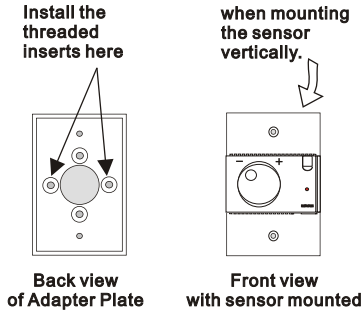


Figure 2. Vertical installation

The following procedure should be used to mount the adapter plate.

Step	Procedure
1	Determine if the sensor is to be mounted horizontally or vertically and locate the adapter plate holes for the threaded inserts (see Figures 1 and 2).
2	Hold the adapter plate with its backside up.
3	<p data-bbox="317 716 987 764">Press the smaller end of a threaded insert (Figure 3) into the appropriate hole until it is tight (Figure 4).</p> <div data-bbox="572 813 767 984" style="text-align: center;"> <p data-bbox="533 984 804 1032">Smaller end of threaded insert must go into hole first</p> </div> <p data-bbox="511 1040 745 1065">Figure 3. Threaded insert</p> <div data-bbox="568 1122 767 1317" style="text-align: center;"> </div> <p data-bbox="497 1317 756 1341">Figure 4. Inserting the insert</p>

continued

Step	Procedure
4	<p>Grasp the adapter plate firmly in one hand (Figure 5), insert one of the pan-head screws from the front side of the plate, and turn the screw until the threaded insert is pulled in and seated.</p> <ul style="list-style-type: none"> ■ Do not over-tighten the screw. <div data-bbox="567 298 769 505" style="text-align: center;"> </div> <p style="text-align: center;">Figure 5. Tightening the pan-head screw</p>
5	Check the back of the adapter plate to make sure that the threaded insert is seated securely in the sensor mounting hole.
6	Loosen and remove the screw.
7	Repeat Steps 1–6 for the other threaded insert, using the sensor mounting hole directly opposite from the first one.
8	Position the adapter plate over the utility box (front side showing).
9	Pull all wiring through the center hole of the plate.
10	Match the countersunk holes on the adapter plate with the holes on the utility box and insert and tighten the flat-head screws from the hardware kit to secure the adapter plate.

Model and Part Numbers

The part number shown in Table 1 should be used to order the Novar part.

Table 1. Novar Part Numbers		
PRODUCT	MODEL NO.	PART NO.
Futura Sensor Mounting Plate	FTS-BPL	732900000

The material in this document is for information purposes only. The contents and the product it describes are subject to change without notice. Novar makes no representations or warranties with respect to this document. In no event shall Novar be liable for technical or editorial omissions or mistakes in this document, nor shall it be liable for any damages, direct or incidental, arising out of or related to the use of this document. No part of this document may be reproduced in any form or by any means without prior written permission from Novar.

Printed in Mexico.

Copyright © 2007 by Honeywell International, Inc.. All Rights Reserved.

Novar; 6060 Rockside Woods Blvd., Cleveland, OH 44131
 Tel.: 800.348.1235 www.novar.com

Notes