

NCH-1000 Dumb Terminal Installation Instructions

Purpose

This document provides a Novar Controls–approved procedure for connecting an NCH-1000 to a personal computer (PC) configured as an interactive (“dumb”) terminal.

Equipment Required

The following equipment is needed to carry out this procedure:

- A PC running Windows® 95, 98, or NT
 - A serial cable with a DB-9 male connector on one end and a connector that is compatible with the PC’s serial port on the other.
-

Overview

Connecting a dumb terminal to an NCH-1000 allows users to view the controller’s operating status and make limited configuration changes. Installing the terminal involves:

- Configuring the PC.
 - Connecting the PC to the NCH-1000.
 - Testing the connection.
-

Configuring the PC

The Windows Hyper Terminal utility is used to configure an available serial port to establish a terminal session with the NCH-1000. The following procedure should be used.

Step	Procedure
1	<p>Click on Start on the Windows taskbar (usually at the bottom of the computer screen) and on the following options to open the HyperTerminal screen (Figure 1):</p> <ul style="list-style-type: none">■ Programs■ Accessories■ Hyper Terminal <hr/> <p>NOTE! The icons shown on the screen will vary, depending on the PC.</p> <hr/>
2	Click on the Hypertrm.exe icon to open the Connection Description screen (Figure 2).
3	<p>Type a name for the terminal in the NAME field and select an icon to represent it.</p> <ul style="list-style-type: none">■ In this document, the terminal is named “NCH.” <p style="text-align: right;"><i>continued</i></p>



Figure 1. Hyper Terminal screen



Figure 2. Connection Description screen

Step	Procedure
4	<p>Click on OK to open the Phone Number screen (Figure 3).</p> <hr/> <p>NOTE! If the PC has a modem installed, the COUNTRY CODE, AREA CODE, and PHONE NUMBER fields will be active. In the examples used in this document, this configuration connects to the NCH-1000 using the PC's serial port and a standard serial cable. No telephone-related entries are required.</p> <hr/>
5	Select an available communication port to configure in the CONNECT USING field and click on OK to display its properties screen (Figure 4).



Figure 3. Phone Number screen

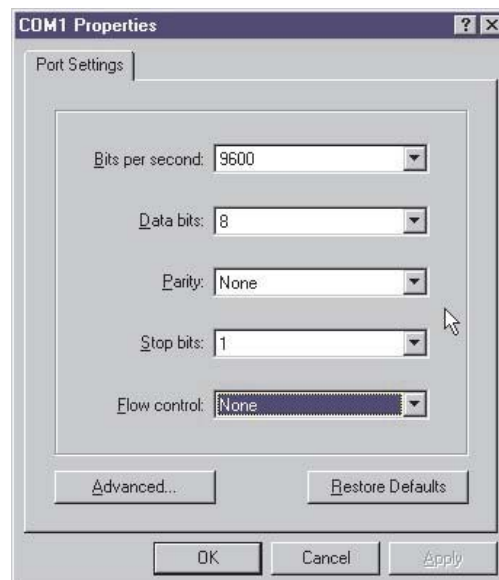


Figure 4. Com Properties screen

NCH-1000 Dumb Terminal Installation Instructions

Step	Procedure
6	Make sure that the Port Settings fields contain the following configuration information: <ul style="list-style-type: none">■ BITS PER SECOND: 9600■ DATA BITS: 8■ PARITY: None■ STOP BITS: 1■ FLOW CONTROL: None
7	Click on OK to save these settings and open the Hyper Terminal session screen (Figure 5).
8	Click on File and Save to save the new session and exit the Hyper Terminal program.

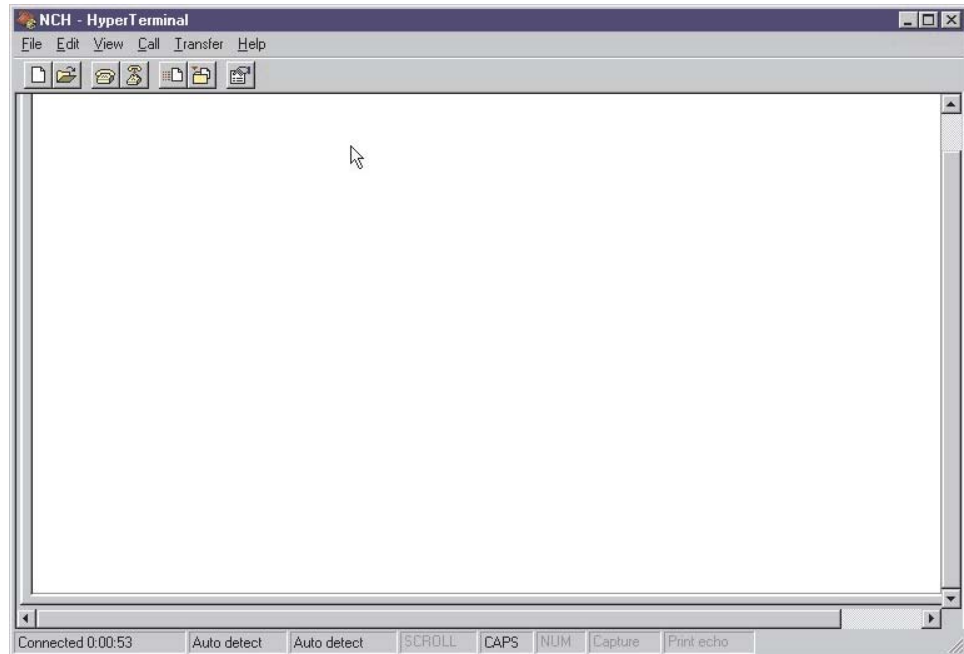


Figure 5. Hyper Terminal session screen

The Hyper Terminal program saves the session using the name specified by the user and creates a session icon on the Hyper Terminal screen by the same name.

Connecting the PC to the NCH-1000

The following procedure should be used to connect the PC to the NCH-1000. If necessary, use a small screw driver to tighten the connections.

Step	Procedure
1	Insert the DB-9 male connector on the serial cable into the RS-232 port in the lower right corner of the NCH-1000.
2	Insert the other end of the serial cable into the PC's COM port configured as the Hyper Terminal and tighten it.

Testing the Connection

The following procedure should be used to test the NCH-1000-to-PC connection.

Step	Procedure
1	Launch the Hyper Terminal program to open the Hyper Terminal screen.
2	Double-click the icon for the NCH terminal session to display the Hyper Terminal session screen and open the session.
3	Press enter twice to display the NCH Main Menu.

If the terminal displays the NCH menu, the connection is confirmed and the terminal is ready for use.



WINDOWS® IS A REGISTERED TRADEMARK OF MICROSOFT CORPORATION.

THE CONTENTS OF THIS DOCUMENT ARE SUBJECT TO CHANGE WITHOUT NOTICE.

COPYRIGHT © 2004 BY NOVAR CONTROLS CORPORATION. ALL RIGHTS RESERVED.
PRINTED IN THE U.S.A.

NOVAR CONTROLS CORPORATION
6060 ROCKSIDE WOODS BLVD., CLEVELAND, OH 44131
TEL.: 800.348.1235 WWW.NOVARCONTROLS.COM

This page intentionally left blank.